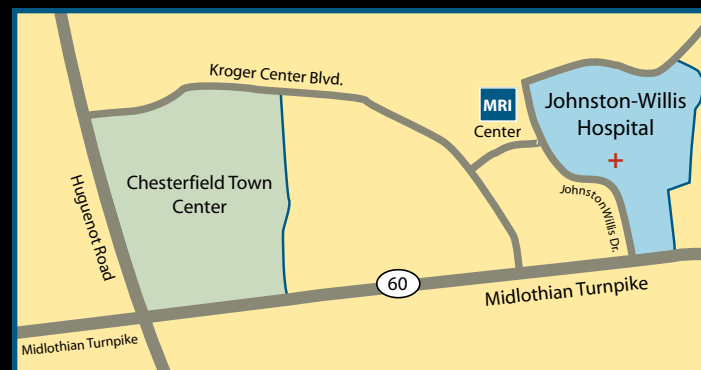


## What is an MRI?

Magnetic Resonance Imaging (MRI) is a diagnostic technique that provides high quality images of organs and structures within your body without surgery or radiation. The MRI scanner uses a powerful magnet, radio waves, and computer technology to produce detailed pictures of the human anatomy. We employ the MRI scan as a tool to best analyze your condition and get you back to your life.

## MRI Imaging Locations

### RICHMOND

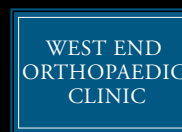


West End Orthopaedic Clinic MRI  
 1400 Johnston-Willis Drive  
 Richmond, VA 23235  
 Phone: (804) 594-4610

### FARMVILLE



West End Orthopaedic Clinic MRI  
 1509 W. Third Street  
 Farmville, VA 23901  
 Phone: (434) 315-0306



www.weoc.com



### **What does an MRI show?**

An MRI shows images that distinguish between healthy and unhealthy tissue. The MRI image is so precise your physician can often gain as much information as if he or she was looking directly at your body's soft tissues.

### **Are there any risks?**

Magnetic resonance imaging is very safe. There are no health risks associated with the magnetic field or radio waves used by the machine.

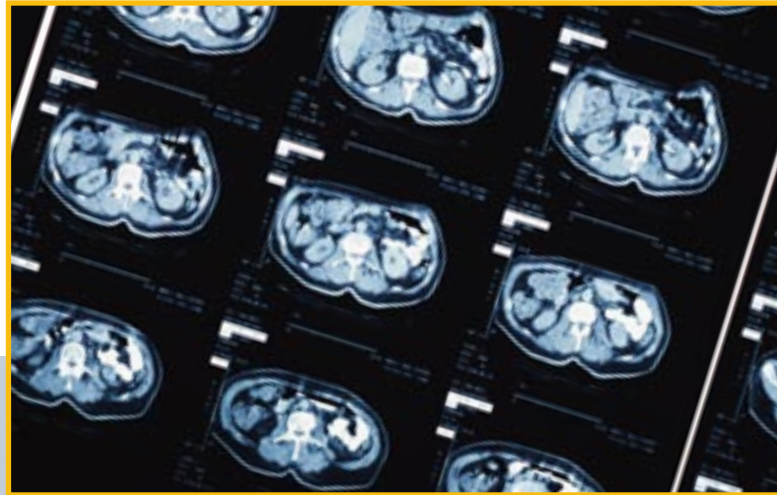
### **How do I prepare for an MRI?**

No special preparation is needed. Eat normally and take medication as usual, unless your doctor has given you other instructions. You may find it easier to relax if you avoid drinking coffee or other caffeinated beverages before the exam.



### **What if I have a metal implant?**

Before you come in for your MRI we will be asking you some "safety questions." Although most implants do not adversely affect the scan, please let our staff member know if you have any implants in your body. It is extremely important to let us know if you have a pacemaker, aneurysm clip, cochlear implant, defibrillator, or if you have ever worked with metal or have gotten metal or rust in your eyes.



### **What will happen when I get scanned?**

Patients are often pleasantly surprised to discover that an MRI is one of the easiest and most comfortable medical exams they have experienced. Before your MRI, the technologist will ask you to lie down on a cushioned table, which moves into a large donut shaped ring. Once the MRI is underway, the technologist will carefully monitor the procedure from the adjacent room. You will be able to speak to him or her through the intercom system. You will hear a knocking sound from the MRI system, which ranges from barely audible to quite noticeable; this is normal.

### **Do I have to lie still when I have an MRI?**

Yes. In order to achieve the best imaging results it is important to minimize movement. You should remain relaxed and as still as possible. The hardest part is to be patient.

### **When is a contrasting agent used?**

To help improve the clarity of certain structures, sometimes a physician requests an injection of a contrasting agent.

### **How long does an exam take?**

For most scans the time required is approximately 20 minutes, although it may take longer depending upon the anatomy or condition for which you are being scanned.

### **How do I get my results?**

A radiologist from Radiology Associates of Richmond will review your images and send a written report to your physician. Your physician will then be able to explain the results to you.

